



Newsletter for March, 2009 from Club Data Corporation

This newsletter is sent monthly to Club Office users to provide helpful hints or information that you may find of value.

This Month: New Tax Tables:

As part of the economic stimulus package, income tax rates have been changed by the federal government. According to the IRS' Notice 1036, the IRS asks the employers begin using these tables in lieu of the previously published tables as soon as possible, but no later than April 1, 2009.

New tax tables are available on the Club Data Website in the download area.

Payroll Survey:

If you use Club Office payroll, please let us know if you provide Group Term Life Insurance Coverage as outlined in IRS Publication 15-B, Employer's Tax Guide to Fringe Benefits. Also, please let us know how you handle it -- whether you do something on a per-paycheck or annual basis to assign the values to payroll records. Thanks for your help.

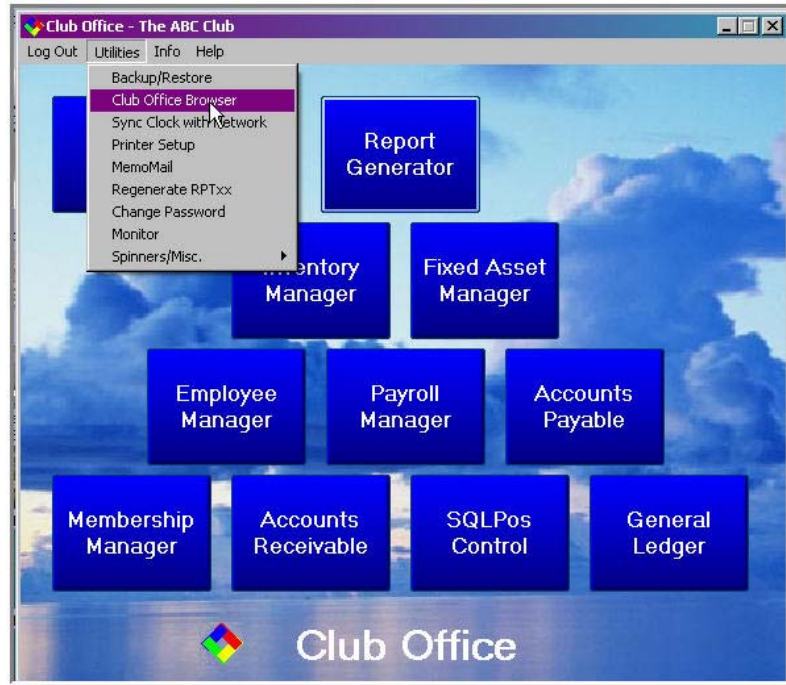
Club Data Now Offers Employee ID Cards and Gift Cards:

In the February, 2009 Newsletter, we introduced employee ID, member ID, and gift card capability within Club Data. If you use Club Office TimeClock or SQLPos and want to use "swipe cards" for your employees, we can create them and send them to you right away. Pricing and other information for ID cards is included on an ordering spreadsheet found on our website. Just fill it out and email it back to us.

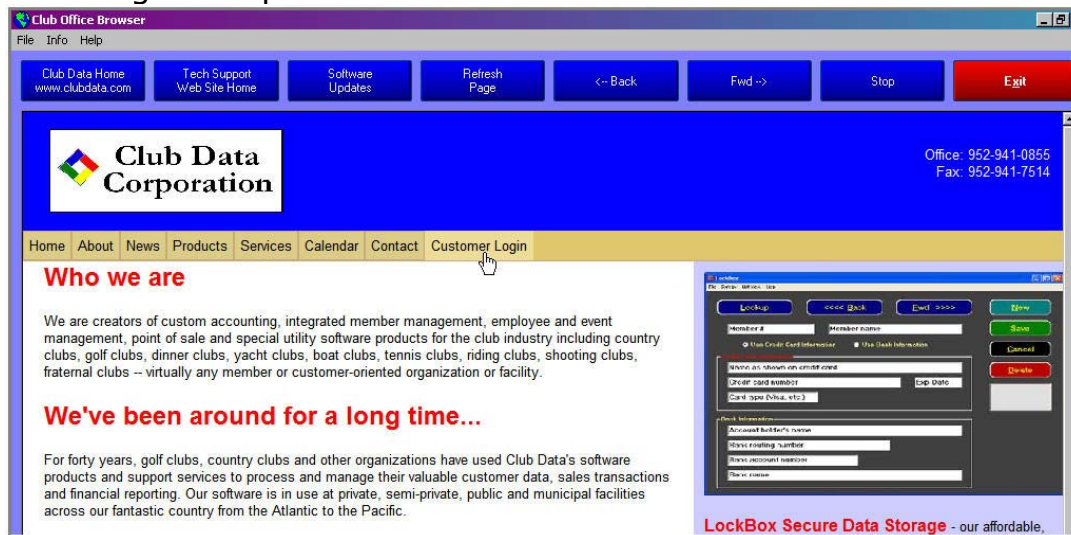
Gift cards can be an exceptional way to increase your revenue while being able efficiently process them and view balances in SQLPos. The cards come in a variety of colors that can include your club logo and the card number. Contact us for specifics on options and prices.



Club Office Browser: Did you know that you could go directly into the Club Office Website if you have an Internet Connection? From the pyramid, just go to Utilities / Club Office Browser and you'll be at our web site where you can find documentation, updates, and other interesting information.



Result: Login and proceed.



Please share this newsletter with your colleagues.

Bill Hallberg
Club Data Sales and Service